

Salon No.8

Works 248 — 269

Apr 23 — Jun 11, 2011



Marine is pleased to announce Salon No. 8, Works 248 – 269, presenting the work of Claire Burbridge, Gerald Förster, Sean Higgins, Ross Jones, Robert Minervini, Patti Oleon and Tim Simmons. Salon No. 8 explores the nature of space by posing questions about isolation and intimacy, presence and vacancy. Whether through landscape or the figure, interior or exterior space, the works in Salon No. 8 invite reflection on emptiness and its inherent uncanniness.

Claire Burbridge (b. 1971, London, England) explores the ways in which the human body can disintegrate and lose its perceivable form. The deconstruction and isolation of selected sections of the visible world, form a theme throughout her work, an ongoing motif particularly visible in her sculptures. Translucent color and light add an unusual dimension to her resin sculptures which, unlike the wax and bronze works, represent the figure in negative space – the absent figure enclosed in a clear cast resin block partially tinted with pigment. Burbridge is a graduate of Magdalen College, Oxford and Camberwell College of Art. Solo exhibitions include Works In Context, SUMARRIA LUNN, London (2009), Sculptures and Drawings, William Angel Gallery, London (2008), Toomey Tourell Gallery, San Francisco (2007). Group shows include Bridge Art Fair, Berlin (2008), Belgravia Contemporary, London (2008) and Zoo Art Fair with Toomey Tourell Gallery, London (2007). The artist was awarded the National Sculpture Prize in 2008.

Gerald Förster (b. 1964, Bad Oeynhausen, Germany) graduated from the School of Photography in Bielefeld, German in 1985. In his recent “Nocturnal” series, Förster creates intimate sexually charged scenarios between diverse couples in the context of elaborate and oddly disconcerting night landscapes. He uses these scenarios as a vehicle for exploring the powerful tensions between intimate physical contact and alienating physical contact. Förster has shown nationally and internationally with Solo Exhibitions in Los Angeles and New York, and Group Exhibitions in Greece, New York and San Francisco. He has received the Fuji Press European Professional Photo 1st Prize, the IPA International Photographer Award in Fine Art, and 1st Prize at World in Focus. Publications include The Wall Street Journal and French Photo.

Sean Higgins (b. 1973, White Haven, Pennsylvania, USA) graduated with an MFA from the University of Pennsylvania in 1998. Higgins creates fictional worlds where time and space are ambiguous. Landscape, outer space, technology, dreams and memories combine to create new environments that could exist equally in the future or in the past. He has had solo shows at sixspace, Los Angeles, Ambach and Rice, Seattle and Collette Blanchard Gallery, New York. Some group show highlights include the currently travelling exhibition Alptraum!, Marine Salons No. 3 and No. 7 and Rogue Wave '05 at LA Louver gallery, Venice, California. He currently lives and works in Los Angeles.

Artists

Claire Burbridge
Gerald Förster
Sean Higgins
Ross Jones
Robert Minervini
Patti Oleon
Tim Simmons

In the Bedroom:
Special Feature
New paintings by
Rives Granade

Media Contact:
Claressinka Anderson

Telephone/Fax
+1 310 392 3649
Cell
+1 310 804 0211

Email
ca@marineprojects.la
Visit
marineprojects.la

Salon No.8

Works 270 — 300

Jul 21 — Sept 15, 2012



Ross Jones' (b. 1983, Birmingham, England) highly finished and detailed drawings are cuttingly political. For all the complex and sensitive issues with which they deal, Jones' works are characterized by calm, considered reflection. In each of his works he seeks to distil a political issue into just one of its visual constituent parts. This requires great consideration as the result stands as a signifier, an iconic symbol, for each individual problem in its entirety. Ross Jones' solo exhibitions include New Works, William Angel Gallery, London (2009). Groups shows include Matt Roberts Arts Salon 08, VINEspace, London (2008), West Midlands Open, Wolverhampton Art Gallery, Wolverhampton (2008), Jerwood Drawing Prize, Jerwood Space, London (2007), and the Celeste Art Prize, The Old Truman Brewery, London (2006). The artist is recipient of the Proof Award (2008) and was also awarded the regional prize for the west of England at the National Open Art competition (2008).

Robert Minervini (b. 1981, Secaucus, New Jersey, USA) received his MFA from the San Francisco Art Institute in 2009, and his BFA from Tyler School of Art in 2005. Minervini's sometimes cryptic paintings are a curious blend of old fashioned heroic landscape from the days of Bierstadt and Caspar David Friedrich and a modern urban post-apocalyptic chic, complete with graffiti and graphic art influences. His work has been exhibited nationally, including solo shows with Gallery Hijinks, Eleanor Harwood Gallery, and group exhibitions at The Yerba Buena Center for the Arts, 941 Geary Gallery, The Brooklyn Historical Society, the San Francisco Arts Commission Gallery, the Luggage Store Gallery, and the Pennsylvania State Museum. He was awarded the Murphy/Cadogan Fellowship by the San Francisco Foundation, the Edwin Austin Abbey Mural Fellowship by the National Academy of Fine Arts in 2008, and the Carmela Corso Scholarship by Tyler School of Art in 2005. His art has been published in New American Paintings No. 91, and "Mural Art: Large Scale Art

from Walls Around the World," He currently lives and works in San Francisco.

Patti Oleon (b. St. Louis, Missouri, USA) received a BA and an MFA from UCLA. Oleon's paintings are created from photographs she has taken in public spaces, including hotel and apartment lobbies and museum period rooms, as well as locations for TV and movies. Her work problematizes and investigates the layers and layering of artifice in these fabricated places. The richly detailed, mysteriously lit, elegant paintings are an amalgam of contradictions, blurring the line between the real and the artificial, the dark and the light, and the banal and the transcendent.

Oleon is the recipient of several grants, including The Adolph and Esther Gottlieb Foundation, the Pollock Krasner Foundation, the Ford Foundation, and a Fulbright/DAAD Fellowship (Germany). She has had solo and group shows in cities including San Francisco, New York, Portland, Los Angeles, and Boston. She lives and works in San Francisco

Tim Simmons' (b.1955, London, England) large scale landscape photographs reflect artistic concerns which attempt to act as a stimulus to rethinking assumptions about the constancy of the land, while exploring the concept of landscape as a representation of the relationship between the human and natural worlds. He has exhibited work both nationally and internationally, including a solo at FAS Contemporary in London in 2009. Simmons currently lives and works in Norfolk, England.

Institute in 2008. Now based in Los Angeles, Granade has exhibited his work in group shows internationally. Granade recently completed a large-scale public painting project as part of a residency in Stavanger, Norway in the spring of 2011 and his work is held in numerous public and private collections.

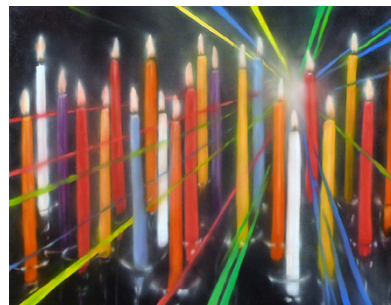
Media Contact:
Claressinka Anderson

Telephone/Fax
+1 310 392 3649
Cell
+1 310 804 0211

Email
ca@marineprojects.la
Visit
marineprojects.la

Salon No.8

Works 270 — 300
Jul 21 — Sept 15, 2012



In the Bedroom
"Everything we see hides another thing, we always want to see what is hidden by what we see."
- Rene Magritte

Marine is pleased to present "Special Feature", a selection of new paintings and video work by Los Angeles based artist, Rives Granade. This collection of works looks at our perception and understanding of visual reality. The artist explains, "We think and we see with analogies. Things that are unique are practically impossible to perceive or describe. Eyes were first understood by comparison with optical images of instruments projected on screens in a dark room, especially of the magical camera obscura. What is the relationship between a screen and a picture? Do we perceive the abstractions on a television screen as abstractions? Are the after images that occur when we close our eyes colorful?

Why does a mirror reflect horizontally and not vertically? The hallucination of reality is a distortion, like the light of the stars that arrives as refracted through the lens of time. We see what we cannot obtain, what has already occurred. Our future is in the past. The screen holds the promise of the unobtainable, behind it lies what? – photons, electrons. Metaphors. We watch ourselves watching others".

Rives Granade (b. 1979, Mobile, Alabama, USA) graduated with an MFA from San Francisco Art Institute in 2008. Now based in Los Angeles, Granade has exhibited his work in group shows internationally. Granade recently completed a large-scale public painting project as part of a residency in Stavanger, Norway in the spring of 2011 and his work is held in numerous public and private collections.

Media Contact:
Claressinka Anderson

Telephone/Fax
+1 310 392 3649
Cell
+1 310 804 0211

Email
ca@marineprojects.la
Visit
marineprojects.la